






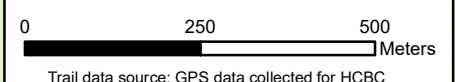


**HORSE COUNCIL
BRITISH COLUMBIA**

- × 500m markers
- Distance end marker
- Start of trail
- Gate
-  Trailhead
-  Cale Creek
-  Coburn Full Loop (9126 m)
-  Mid-section Track (2057 m)
-  To Cale Creek (1292 m)
-  Not maintained/
Rough trail
-  Road



Trail data source: GPS data collected for HCBC
Base data source: Province of BC, ESRI Basema

03 February 2026
Archana Shejwalkar



Fraser River

Cale Creek

Cale Creek Pitt Road

Merton Rd

Canadian Nite